

To be transferred 2003-4_(ex Invincible)

13 SDF

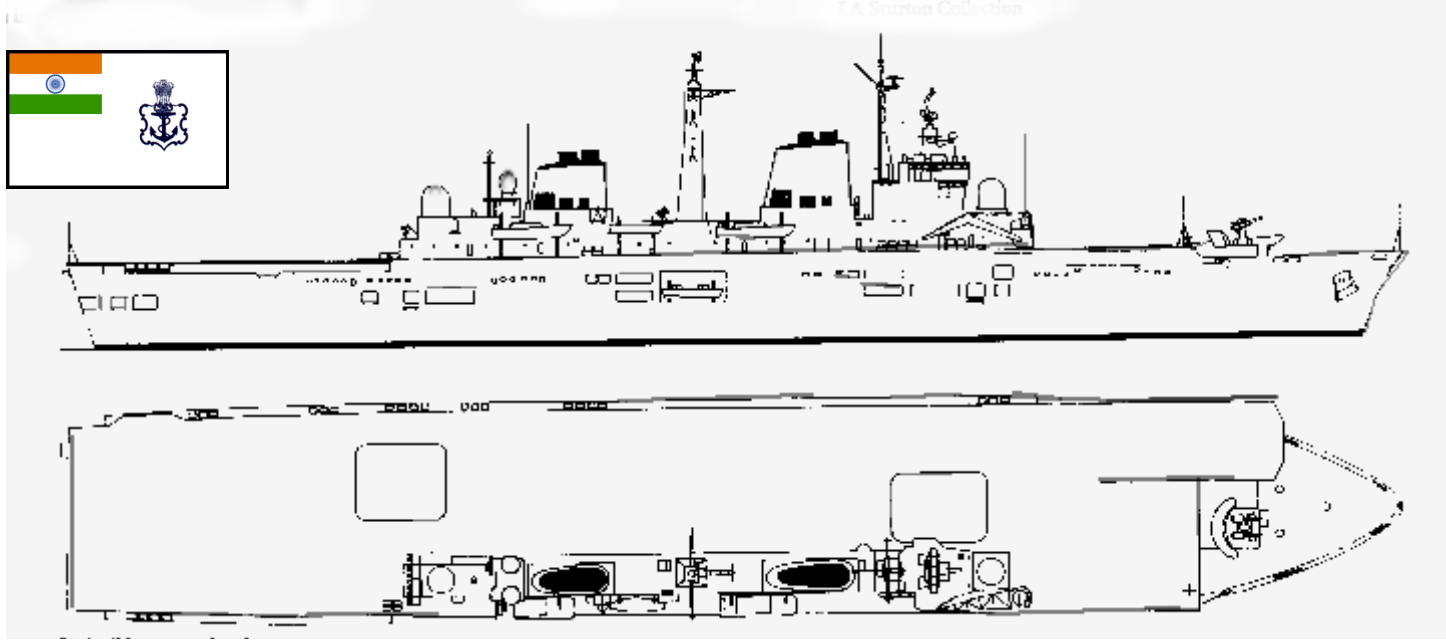


	System	SAF	RG	LADF	ADF	CAD	PDF	ASW	
1	PHALANX	-	-	-	-	-	5	-	NOISE +2
2	ECM	-	-	-	-	-	5	-	
3	PHALANX	-	-	-	-	-	5	-	
4	SONAR		+0		-	-	-	-	
5	20mm	.5	1				1	-	ASW Decoy
	TRISHUL??								
	SW Radar		+3		-	-	-	-	
6	AW Radar		+5		-	-	-	-	

Trishul ???																				
-------------	--	--	--	--	--	--	--	--	--	--	--	--	--	--	--	--	--	--	--	--

SEA HARRIER	1	2	3	4	5	6	7	8	7/3 ADF +1 EW	6 x 500Kg bombs or 2 Sea Eagle ASM.	
SEAKING AEW	1	2	3						2 ADF + 2EW	RADAR +3 NO ARMAMENT.	
SEAKING HAS.5	1	2	3	4	5	6	7	8	9	2 ADF + 1EW	4 ASW Torpedoes. RADAR +1

FIRE	FLOOD-ING	HELM	ELECTRONICS SYSTEMS	HANGAR 1	FWD FLIGHT DECK	AMIDSHIPS FLIGHT DECK	FWD LIFT
				HANGAR 2	AFT FLIGHT DECK		AFT LIFT



28	25	15	10	5	SUNK
----	----	----	----	---	------

VIRAAT

17 SDF

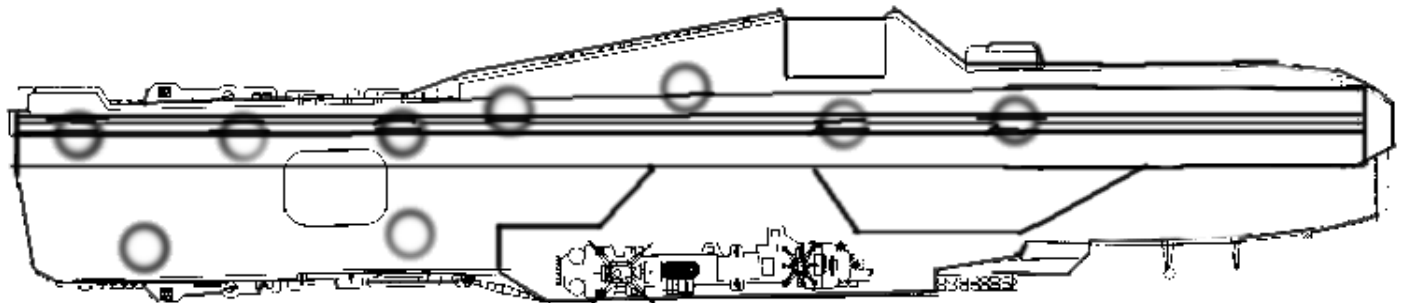
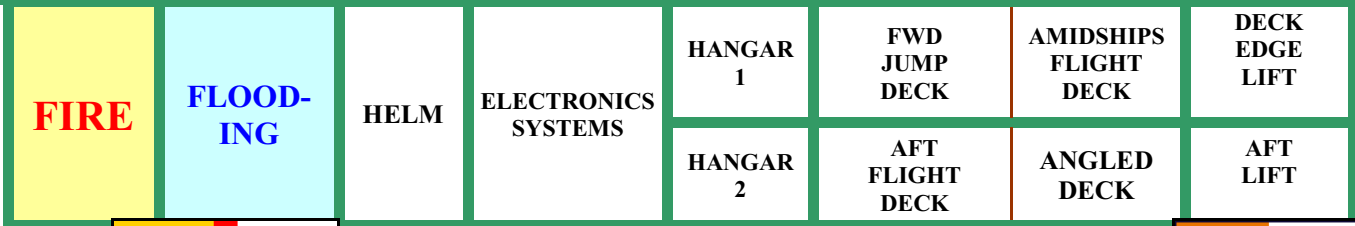


	System	SAF	RG	LADF	ADF	CAD	PDF	ASW
1	40 mm /60	1	2	-	-	-	1	-
2	ECM	-	-	-	-	-	5	-
3	BARAK SAM	-	-	-	-	3	4	
3	30mm AK230	1	2	-	-	-	2	
4	SONAR		-1		-	-	-	-
5	SW Radar		+3		-	-	-	-
6	AW Radar		+5		-	-	-	-

NOISE +5

ASW Decoy

SEAHARRIER	1	2	3	4	5	6	7	8	9	10	11	12	7/3 ADF +1 EW 6 x 500Kg bombs or 2 Sea Eagle ASM.
SEAKING Mk 42C	1	2	3	Transport and assault duties, ASR etc.									
SEAKING Mk 42B	1	2	3	4	ASW .								
Ka 29/31 HELIX	1	2	3	4	AEW. Airborne early warning.								
Ka 28 Helix A	1	2	3	4	ASW.								



25	20	15	10	5	SUNK
----	----	----	----	---	------

VIKRANT? Ex Admiral Gorshkov 23 SDF



	System	SAF	RG	LADF	ADF	CAD	PDF
1	30mm AK630	1	2	-	-	-	4
2	30mm AK630	1	2	-	-	-	4
3	ECM	-	-	-	-	-	6
	30mm AK630	1	2	-	-	-	4
4	30mm AK230	1	2	-	-	-	4
	SONAR		-1				
5	SW Radar		+4				
6	AW Radar		+5				

NOISE +3

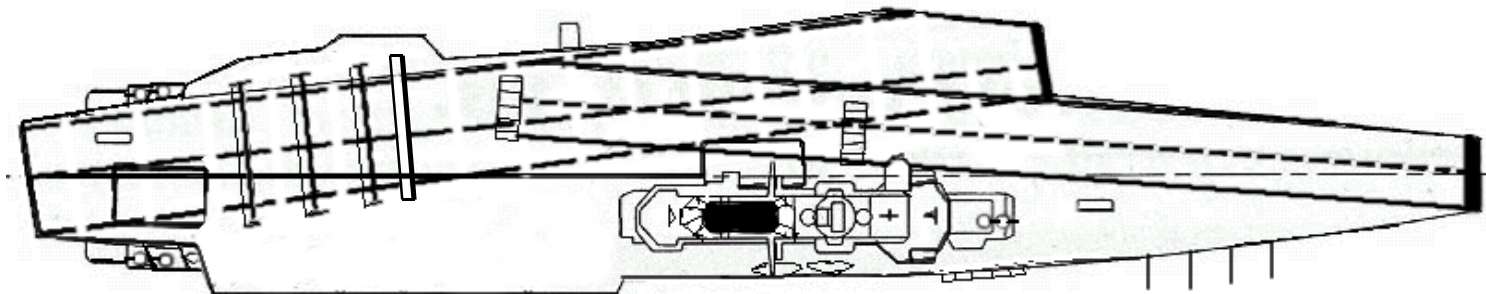
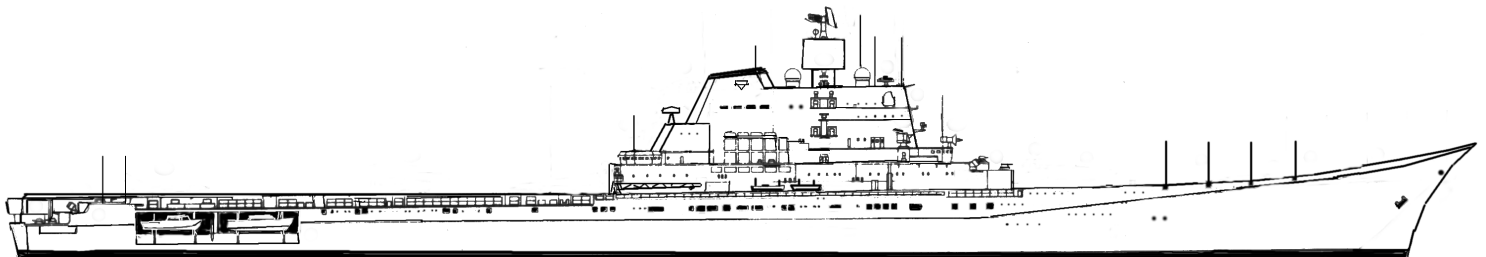
ASW Decoy -3

MiG 29K	1	2	3	4	5	6	7	8	9	10	11	12	8/5 ADF +2 EW 4 x 1000Kg bombs or 2 AS12 or AS14.
	13	14	15	16	17	18	19	20	21	22	23	24	
Ka 29/31 HELIX	1	2			3 ADF + 2 EW. Radar 2. AEW. Airborne early warning.								
Ka 28 Helix A	1	2	3	4	Two ASW torpedoes. Or two depth charges.								

FIRE	FLOODING	HELM	ELECTRONICS SYSTEMS	HANGAR	FWD JUMP DECK	AMIDSHIPS FLIGHT DECK	FWD LIFT
					AFT FLIGHT DECK	ANGLED DECK	AFT LIFT



SKI JUMP allows for only one aircraft at a time to launch. 11 MiG 29 must be stowed on deck as hangar only holds 13 plus helicopters.



32	25	15	10	5	SUNK
----	----	----	----	---	------

VIKRANT

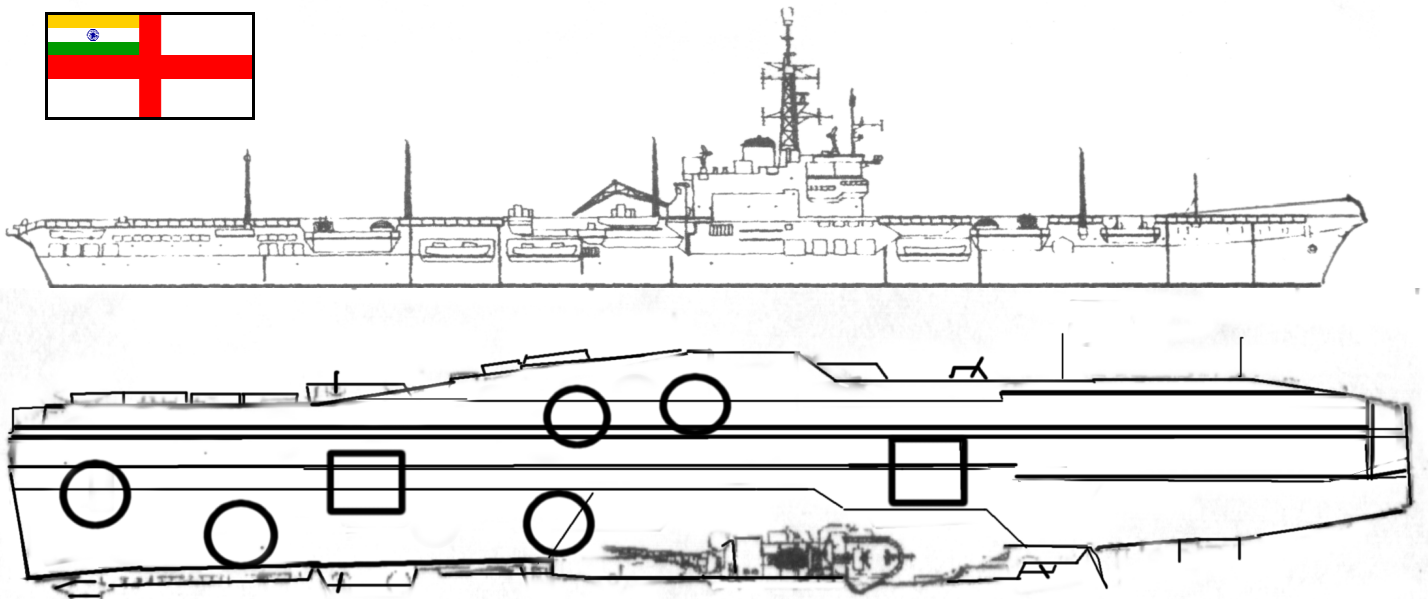
17 SDF



	System	SAF	RG	LADF	ADF	CAD	PDF	ASW	
1	ECM	-	-	-	-	-	0	-	NOISE +5
2	SW Radar	+2		-	-	-	-	-	
3	40 mm /60	1	2	-	-	-	1	-	ASW Decoy NIL
4	40 mm /60	1	2	-	-	-	1	-	
5	AW Radar	+3							
6	SONAR	-2			-	-	-	-	

CHEETAK HELICOPTERS	1	2	3	4	5	6	7	8	9	ADF=2. SONAR = 1. 1 ASW Torpedo or depth charge.
SEA HARRIER.	1	2	3	4	5	6	CRAA 7, Dogfight 9. ADF=7/3 + 1 EW. 6 x 500 kg bombs. One or two ASM's.			

FIRE	FLOOD-ING	HELM	ELECTRONICS SYSTEMS	HANGAR 1	FWD JUMP DECK	AMIDSHIPS FLIGHT DECK	FWD LIFT
				HANGAR 2	AFT FLIGHT DECK		AFT LIFT



20	15	12	10	5	SUNK
----	----	----	----	---	------

Original speed of 24-25 knots not attainable by 1980